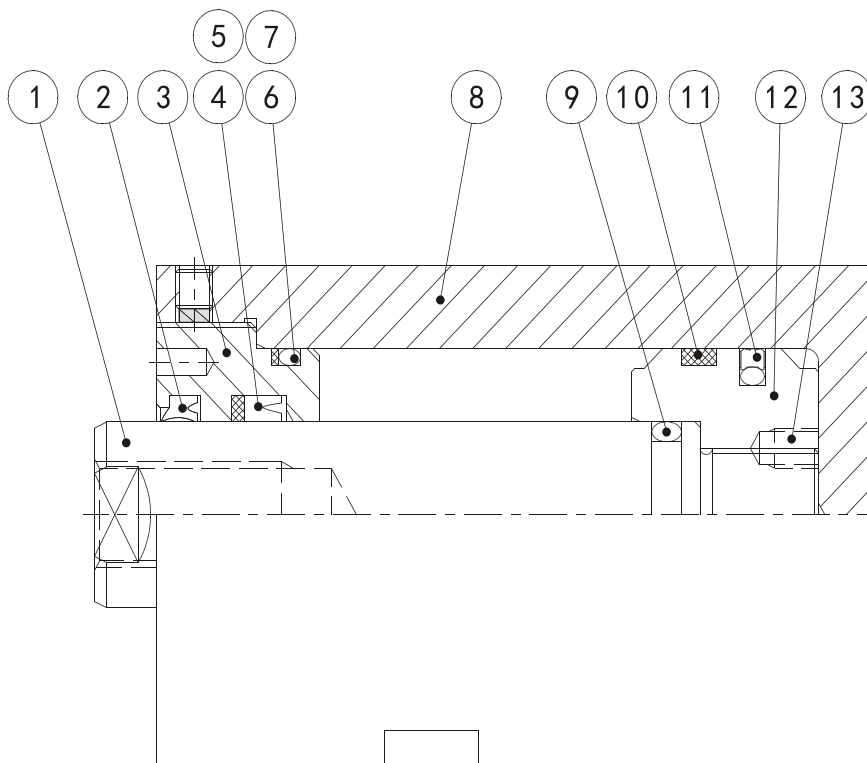


BLOCK CYLINDER FOR MAGNETIC SENSORS-JEBL



- A variety of installation options are available for customers to choose.
- All the seals adopt the specifications from well-known foreign brands.
- Save space,easy installation, suitable for mold and processing fixture or installation space is limited.
- Similar to the installation size of VBL.

INTERNAL STRUCTURE AND PART NAMES



item	part name	qty	item	part name	qty	item	part name	qty
①	rod	1	⑥	cover O ring	1	⑪	wear ring	1
②	rod cover dust seal	1	⑦	cover backup ring	1	⑫	piston	1
③	rod cover	1	⑧	tube	1	⑬	set screw	1
④	rod cover backup ring	1	⑨	rod O ring	1			
⑤	rod cover seal	1	⑩	piston seal	1			

Tie-rod Hydraulic Cylinder

Mold Hydraulic Cylinders

Swivel & Clamp Hydraulic Cylinders

Booster Cylinders & Unclamping cylinders

ISO Specifications Cylinders

Round Hydraulic Cylinders

Specific Hydraulic Cylinders

Systems & Fittings

SEAL SPEC.

Item	②	④	⑤	⑥+⑦	⑨	⑪
Name	rod cover dust seal	Backup ring	rod cover seal	cover O ring	piston O ring	piston seal
	(NBR)	(PTFE)	(NBR)	(1A)	(1A)	(1B)
Bore	1	1	1	1	1	1
32	18x26x6	18x26x2t	18x26x5	P36	P14	32x24.5x3.2
40	22x30x6	22x30x2t	22x30x5	G35+BUR	P18	40x32.5x3.2
50	28x36x6	28x36x2t	28x36x6	G45+BUR	P22A	50x39x4.2
63	36x44x6.5	36x46x3t	36x46x6	G58+BUR	G30	63x52x4.2
80	45x53x6.5	45x55x3t	45x55x6	G75+BUR	G40	80x69x4.2
100	56x64x6.5	56x66x3t	56x66x6	G95+BUR	G50	100x84.5x6.3

ORDER INDICATION



Block cylinder for magnetic sensors

Type

- M1:foot flange,through-hole installation
- M2:foot flange,thread installation
- M3:manifold block,foot flange,through-hole installation
- M12:manifold block,foot flange,thread installation
- M4:head manifold block through-hole installation
- M5:head manifold block thread installation
- M8:rod manifold block through-hole installation
- M9:rod manifold block thread installation
- M6:through-hole installation (countersunk in front)
- M7:through-hole installation (countersunk behind)
- M10:thread installation (thread in front)
- M11:thread installation (thread behind)
- M13:Internal tooth, foot flange

Performance

- blank = standard
- J: heat/acid & alkali resistance

Seal material

- Empty: Standard (NBR)
- 2:(PU)
- 3:(FPM)

Stroke (mm)

Refer to 'External dimensions'

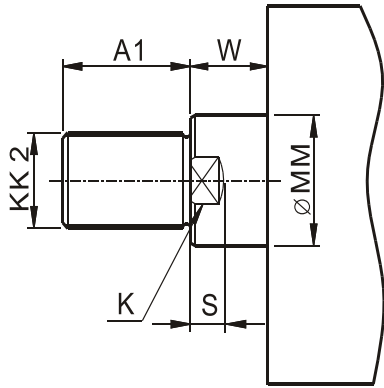
Bore (mm)

φ 32、 φ 40、 φ 50、 φ 63、 φ 80、 φ 100

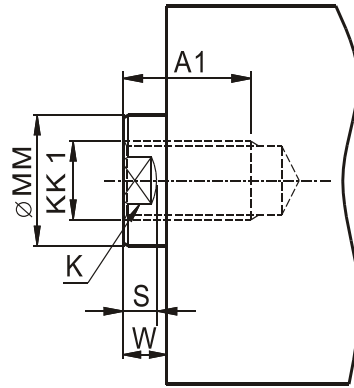
Shaft

- EX:External thread
- IN:Internal thread
- T:T-slot

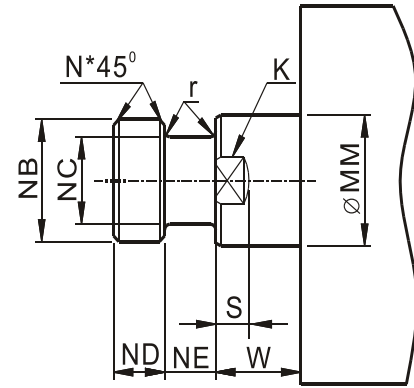
EXTERNAL DIMENSIONS



EX:External thread



IN:Internal thread



T:T-slot

Symbol Bore	MM	K	KK 1	KK 2	NB	A1	NC	ND	NE	n	r	S	W
	32	18	16	M12 × 1.75	M12 × 1.75	16	20	10	8	8	1	1	9
40	22	20	M12 × 1.75	M12 × 1.75	20	25	13	10	10	1	1	9	10
50	28	24	M16 × 2.0	M16 × 2.0	25	30	16	13	13	1	1	9	10
63	36	32	M20 × 2.5	M20 × 2.5	33	40	22	16	16	2	2	13	14
80	45	40	M27 × 3.0	M27 × 3.0	42	50	30	20	20	2	2	13	14
100	56	50	M36 × 4.0	M36 × 4.0	53	60	36	30	30	2	2	14	15

Tie-rod Hydraulic Cylinder

Mold Hydraulic Cylinders

Swivel & Clamp Hydraulic Cylinders

Booster Cylinders & Unclamping cylinders

ISO Specifications Cylinders

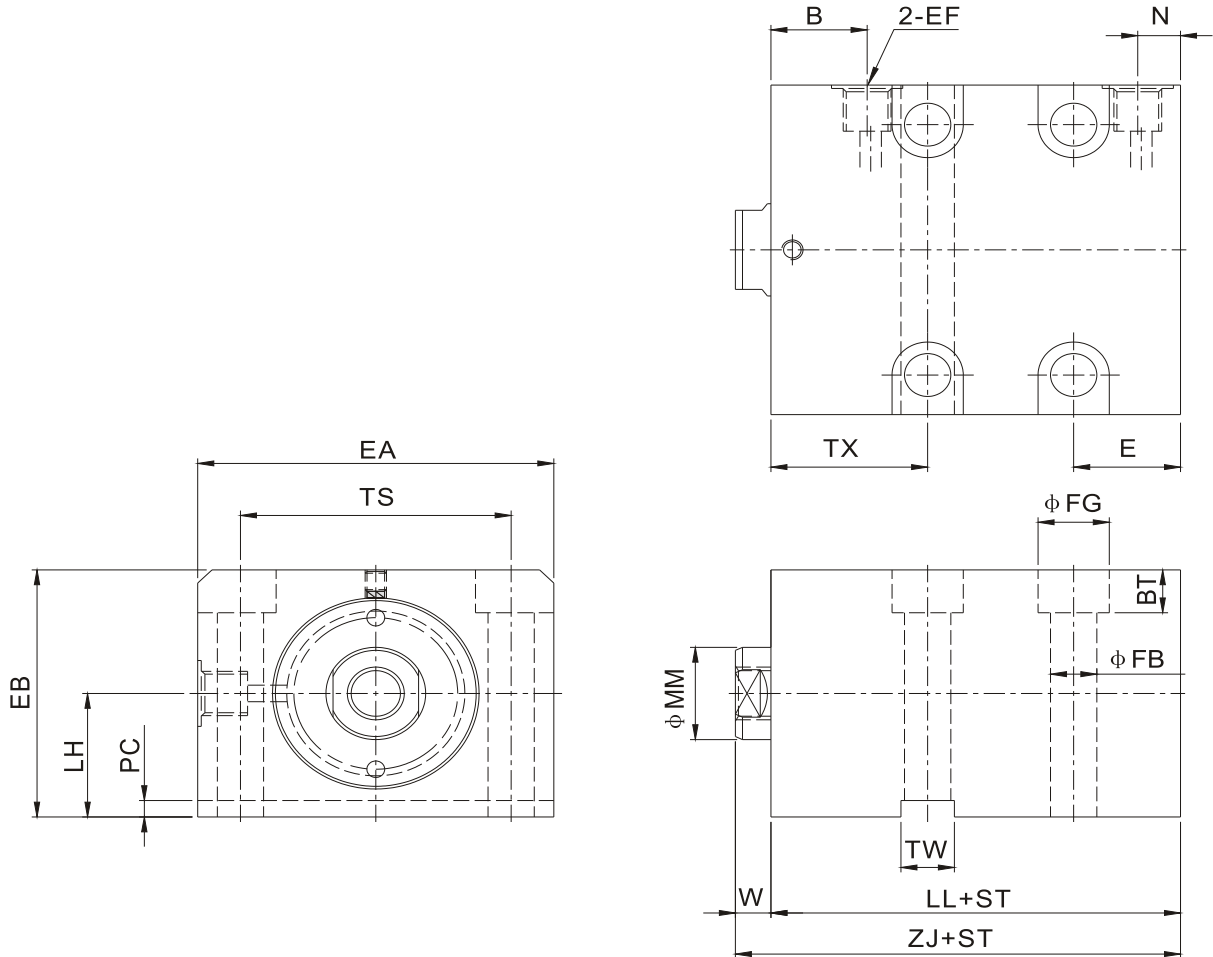
Round Hydraulic Cylinders

Specific Hydraulic Cylinders

Systems & Fittings

EXTERNAL DIMENSIONS

- JEBL-M1-IN Internal tooth,foot flange,through-hole installation



Symbol Bore	MM	W	TW	FB	FG	BT	TX	B	PC	LH	EB	TS	EA	EF
32	18	10	12	10.5	17	11	38	21	3	27.5	55	55	75	G1/4
40	22	10	12	10.5	17	11	40	25	3	31.5	63	63	85	G1/4
50	28	10	15	13	20	13	44	27	5	37.5	75	76	100	G1/4
63	36	14	20	17	26	17.5	50	27	5	47.5	95	95	125	G1/2
80	45	14	24	21	32	21.5	60	35	7	60	120	120	160	G1/2
100	56	15	28	25	39	25.5	64	36	7	75	150	158	200	G1/2

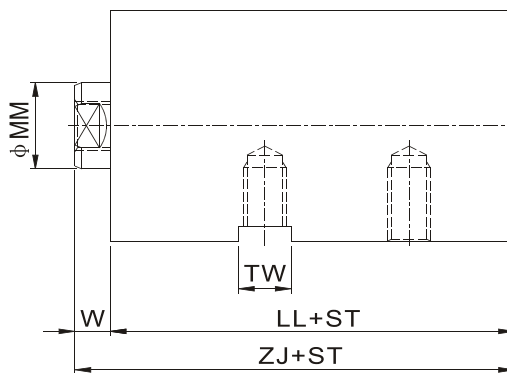
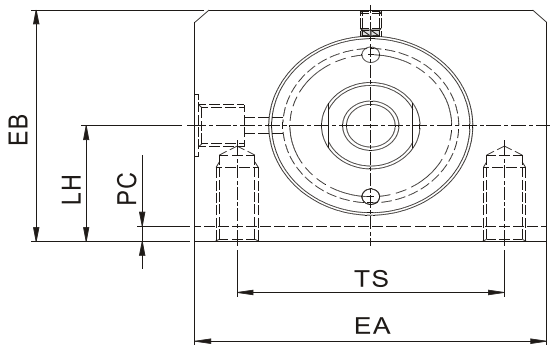
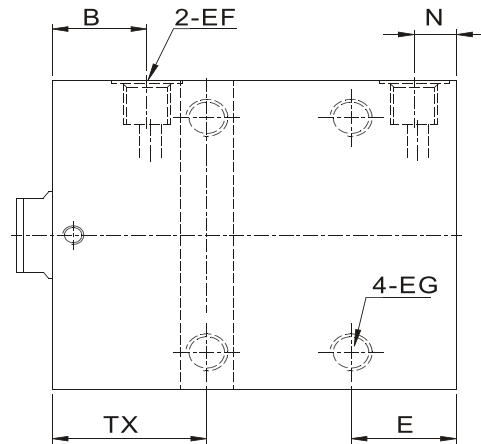
Symbol Bore	Stroke range	N	E	LL	ZJ
32	≤140	11	27	50	60
40	≤160	11	27	54	64
50	≤170	12	30	65	75
63	≤180	17	41	72	86
80	≤190	20	47	85	99
100	≤200	20	54	90	105

Symbol Bore	Stroke range	N	E	LL	ZJ
32	>140	21	38	66	76
40	>160	25	40	76	86
50	>170	27	44	82	92
63	>180	27	50	92	106
80	>190	35	60	109	123
100	>200	36	64	106	121

Note:IN/EX/T-slot size refer to P154 type of piston rod shaft end.

EXTERNAL DIMENSIONS

- JEBL-M2-IN Internal tooth,foot flange,thread installation



Symbol Bore	MM	W	TW	TX	B	PC	LH	EB	TS	EA	EF	EG
32	18	10	12	38	21	3	27.5	55	55	75	G1/4	M10×1.5×20dp
40	22	10	12	40	25	3	31.5	63	63	85	G1/4	M10×1.5×20dp
50	28	10	15	44	27	5	37.5	75	76	100	G1/4	M12×1.75×24dp
63	36	14	20	50	27	5	47.5	95	95	125	G1/2	M16×2.0×32dp
80	45	14	24	60	35	7	60	120	120	160	G1/2	M20×2.5×35dp
100	56	15	28	64	36	7	75	150	158	200	G1/2	M24×3.0×50dp

Symbol Bore	Stroke range	N	E	LL	ZJ
32	≤140	11	27	50	60
40	≤160	11	27	54	64
50	≤170	12	30	65	75
63	≤180	17	41	72	86
80	≤190	20	47	85	99
100	≤200	20	54	90	105

Symbol Bore	Stroke range	N	E	LL	ZJ
32	>140	21	38	66	76
40	>160	25	40	76	86
50	>170	27	44	82	92
63	>180	27	50	92	106
80	>190	35	60	109	123
100	>200	36	64	106	121

Note:IN/EX/T-slot size refer to P154 type of piston rod shaft end.

Tie-rod Hydraulic Cylinder

Mold Hydraulic Cylinders

Swivel & Clamp Hydraulic Cylinders

Booster Cylinders & Unclamping cylinders

ISO Specifications Cylinders

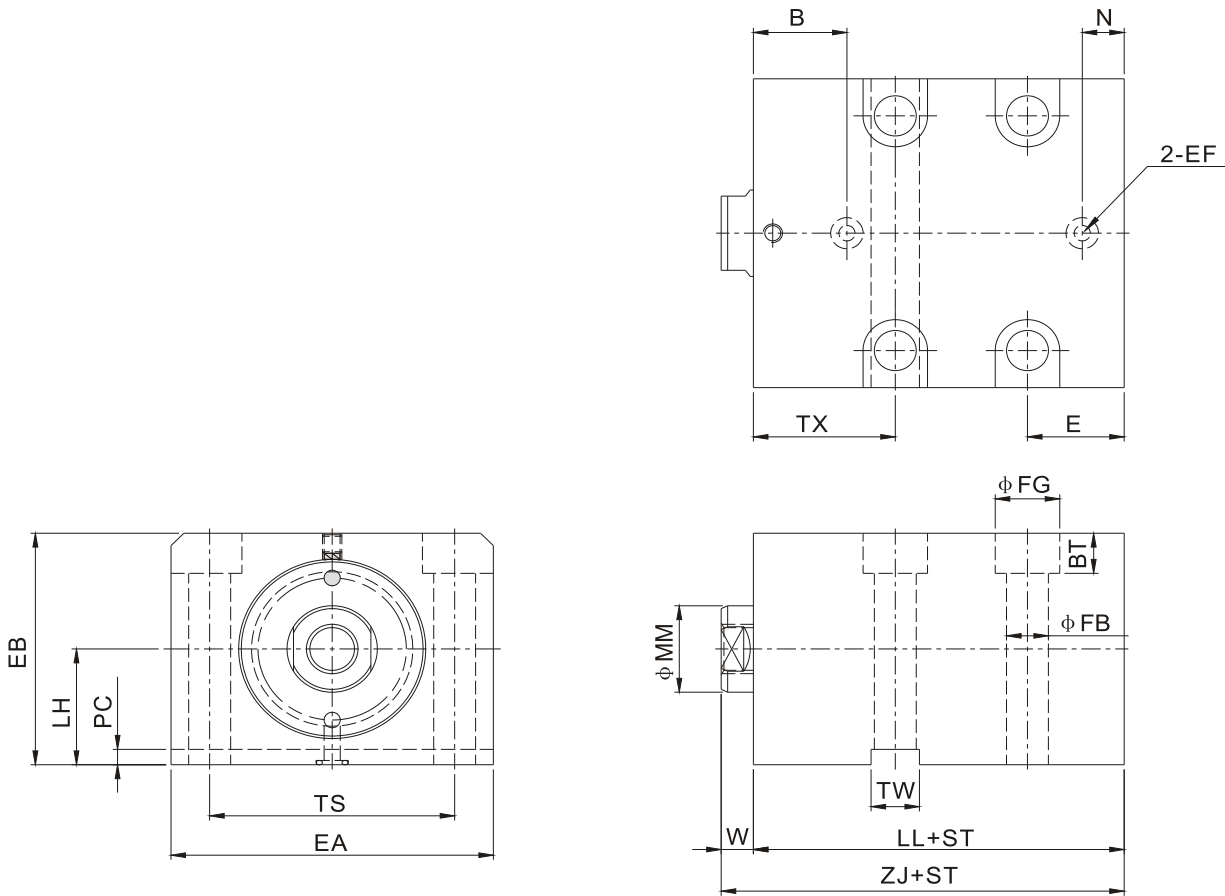
Round Hydraulic Cylinders

Specific Hydraulic Cylinders

Systems & Fittings

EXTERNAL DIMENSIONS

- JEBL-M3-IN internal tooth, manifold block, foot flange, through-hole installation



Symbol Bore	MM	W	TW	FB	FG	BT	TX	B	PC	LH	EB	TS	EA	EF
32	18	10	12	10.5	17	11	38	25	3	27.5	55	55	75	∅9.7×1.4Bottom hole ∅4
40	22	10	12	10.5	17	11	40	27	3	31.5	63	63	85	∅9.7×1.4Bottom hole ∅4
50	28	10	15	13	20	13	44	29	5	37.5	75	76	100	∅9.7×1.4Bottom hole ∅5
63	36	14	20	17	26	17.5	50	32	5	47.5	95	95	125	∅9.7×1.4Bottom hole ∅5
80	45	14	24	21	32	21.5	60	39	7	60	120	120	160	∅12.7×1.4Bottom hole ∅7
100	56	15	28	25	39	25.5	64	40	7	75	150	158	200	∅12.7×1.4Bottom hole ∅7

Symbol Bore	Stroke range	N	E	LL	ZJ
32	≤140	10	27	50	60
40	≤160	10	27	54	64
50	≤170	13	30	65	75
63	≤180	16	41	72	86
80	≤190	21	47	85	99
100	≤200	25	54	90	105

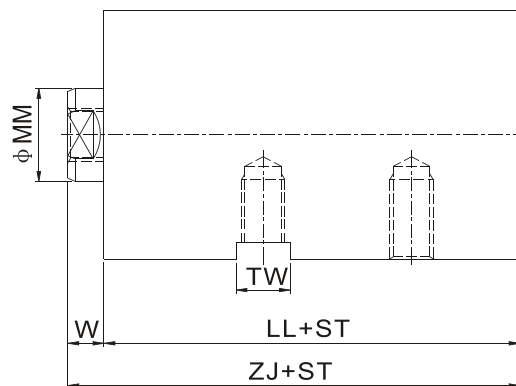
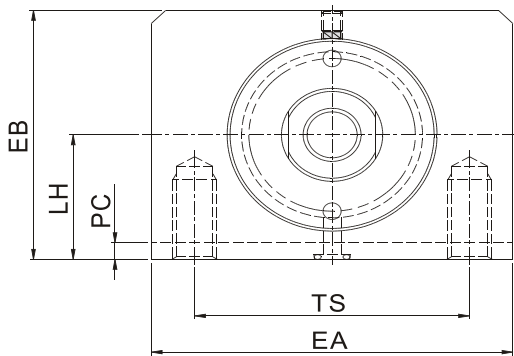
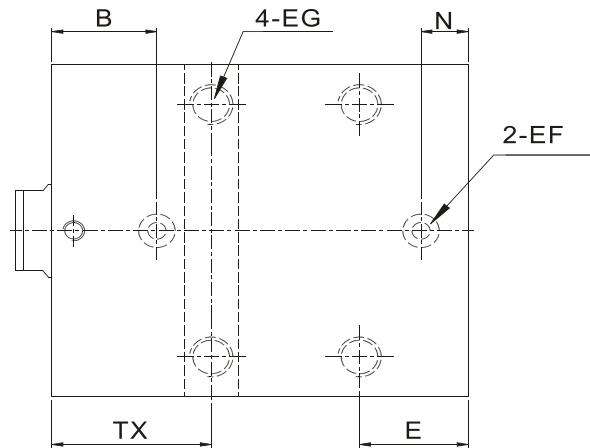
Symbol Bore	Stroke range	N	E	LL	ZJ
32	>140	25	38	66	76
40	>160	27	40	76	86
50	>170	29	44	82	92
63	>180	32	50	92	106
80	>190	39	60	109	123
100	>200	40	64	106	121

Oil port O-ring size	
Bore	Spec.
∅32	P7
∅40	P7
∅50	P7
∅63	P7
∅80	P10
∅100	P10

Note:IN/EX/T-slot size refer to P154 type of piston rod shaft end.

EXTERNAL DIMENSIONS

- JEBL-M12-IN Internal tooth, manifold block, foot flange, thread installation



Symbol Bore	MM	W	TW	TX	B	PC	LH	EB	TS	EA	EF	EG
32	18	10	12	38	25	3	27.5	55	55	75	∅9.7×1.4Bottom hole ∅4	M10×1.5×20dp
40	22	10	12	40	27	3	31.5	63	63	85	∅9.7×1.4Bottom hole ∅4	M10×1.5×20dp
50	28	10	15	44	29	5	37.5	75	76	100	∅9.7×1.4Bottom hole ∅5	M12×1.75×24dp
63	36	14	20	50	32	5	47.5	95	95	125	∅9.7×1.4Bottom hole ∅5	M16×2.0×32dp
80	45	14	24	60	39	7	60	120	120	160	∅12.7×1.4Bottom hole ∅7	M20×2.5×35dp
100	56	15	28	64	40	7	75	150	158	200	∅12.7×1.4Bottom hole ∅7	M24×3.0×50dp

Symbol Bore	Stroke range	N	E	LL	ZJ
32	≤140	10	27	50	60
40	≤160	10	27	54	64
50	≤170	13	30	65	75
63	≤180	16	41	72	86
80	≤190	21	47	85	99
100	≤200	25	54	90	105

Symbol Bore	Stroke range	N	E	LL	ZJ
32	>140	25	38	66	76
40	>160	27	40	76	86
50	>170	29	44	82	92
63	>180	32	50	92	106
80	>190	39	60	109	123
100	>200	40	64	106	121

Oil port O-ring size	
Bore	Spec.
∅32	P7
∅40	P7
∅50	P7
∅63	P7
∅80	P10
∅100	P10

Note:IN/EX/T-slot size refer to P154 type of piston rod shaft end.

Tie-rod Hydraulic Cylinder

Mold Hydraulic Cylinders

Swivel & Clamp Hydraulic Cylinders

Booster Cylinders & Unclamping cylinders

ISO Specifications Cylinders

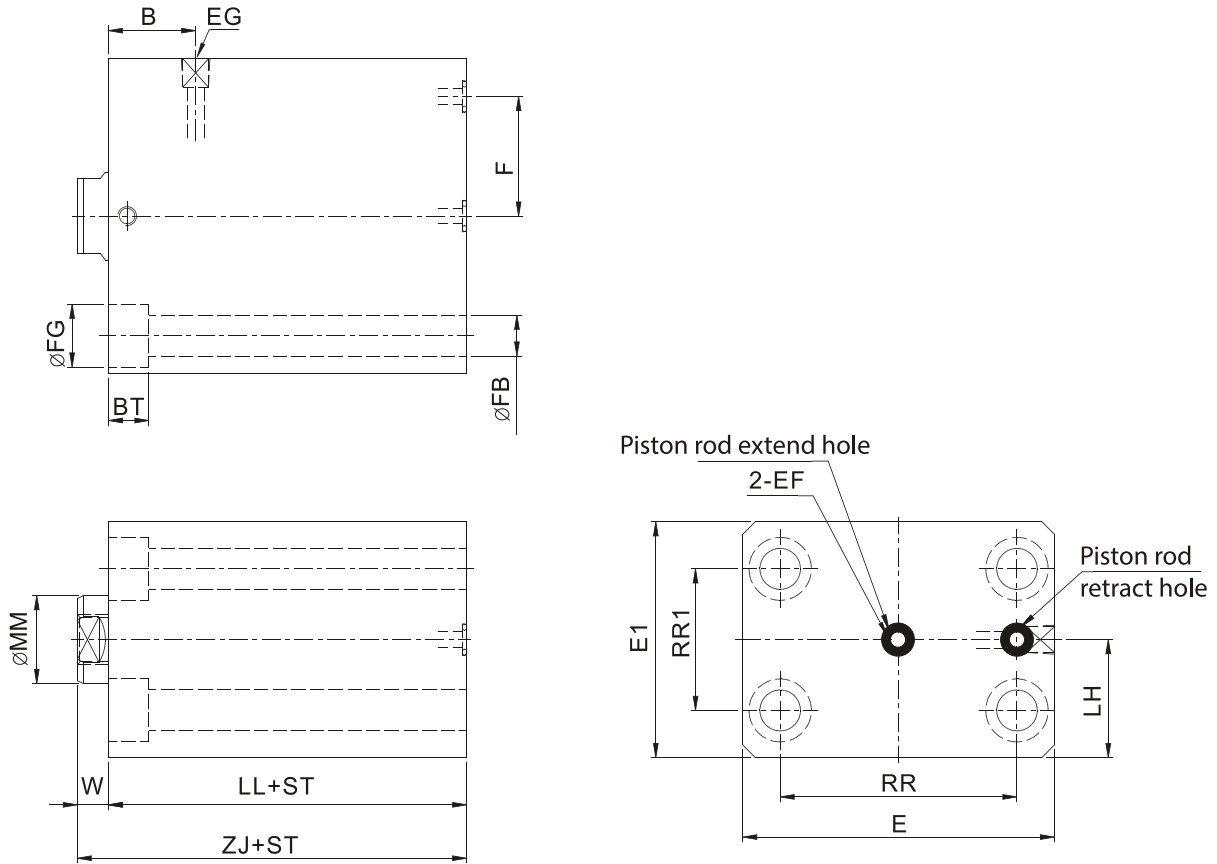
Round Hydraulic Cylinders

Specific Hydraulic Cylinders

Systems & Fittings

EXTERNAL DIMENSIONS

- JEBL-M4-IN Internal tooth, head manifold block, through-hole installation



Symbol Bore	MM	W	RR	E	RR1	E1	B	F	LH	EG	EF	FG	FB	BT
32	18	10	55	75	35	55	24	27.5	27.5	RC1/16	\varnothing 9.7×1.4 Bottom hole \varnothing 4.2	16.5	10.5	11
40	22	10	63	85	40	63	29	31.5	31.5	RC1/16	\varnothing 9.7×1.4 Bottom hole \varnothing 4.2	17	10.5	11
50	28	10	76	100	45	75	28	38	37.5	RC1/8	\varnothing 9.7×1.4 Bottom hole \varnothing 5	20	13	13
63	36	14	95	125	65	95	32	47.5	47.5	RC1/8	\varnothing 9.7×1.4 Bottom hole \varnothing 5	26	17	17.5
80	45	14	120	160	80	120	39	60	60	RC1/4	\varnothing 12.7×1.4 Bottom hole \varnothing 7	32	21	21.5
100	56	15	158	200	108	150	36.5	79	75	RC1/4	\varnothing 12.7×1.4 Bottom hole \varnothing 7	38	25	25.5

Symbol Bore	Stroke range	LL	ZJ
32	≤ 140	50	60
40	≤ 160	54	64
50	≤ 170	65	75
63	≤ 180	72	86
80	≤ 190	85	99
100	≤ 200	90	105

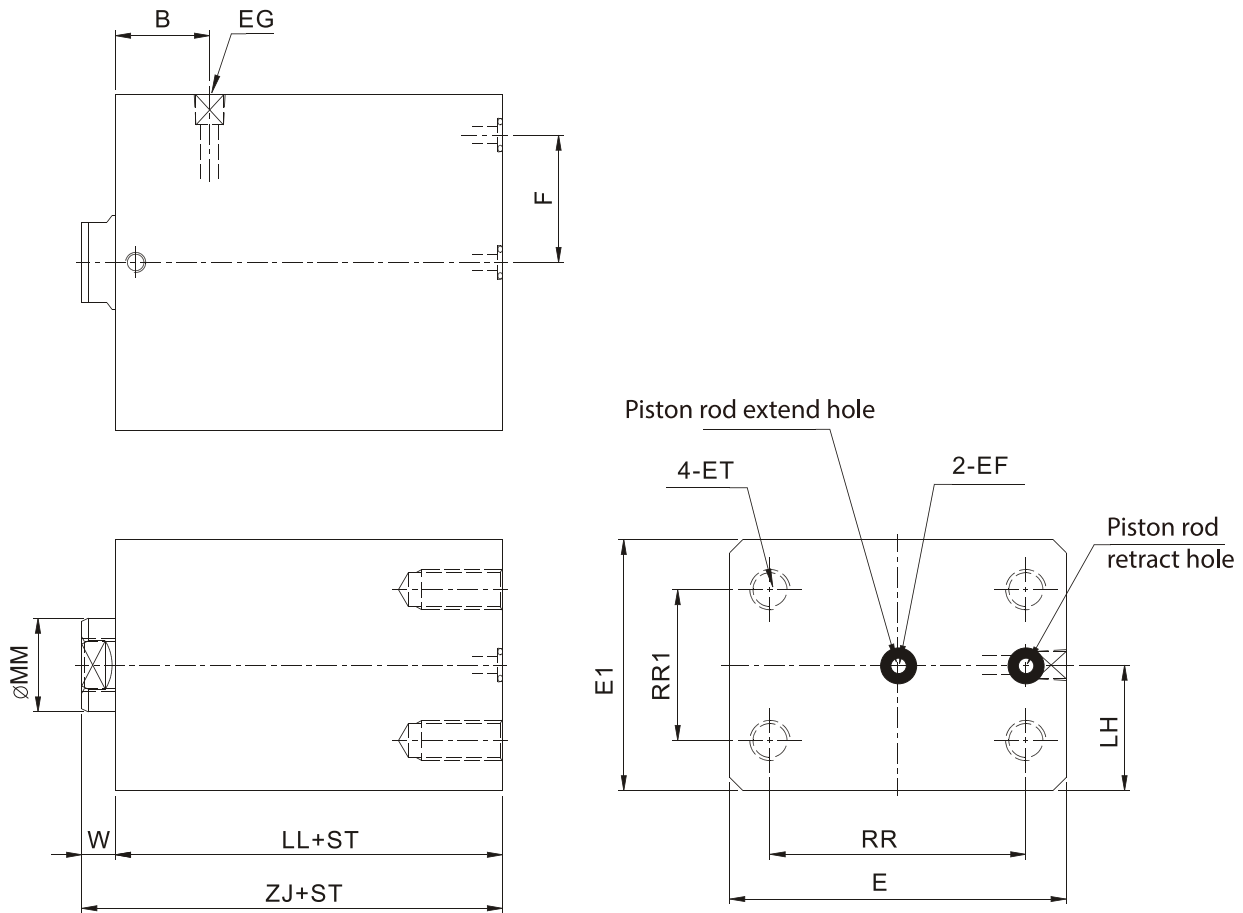
Symbol Bore	Stroke range	LL	ZJ
32	> 140	66	76
40	> 160	76	86
50	> 170	82	92
63	> 180	92	106
80	> 190	109	123
100	> 200	106	121

Oil port O-ring size	
Bore	Spec.
\varnothing 32	P7
\varnothing 40	P7
\varnothing 50	P7
\varnothing 63	P7
\varnothing 80	P10
\varnothing 100	P10

Note: IN/EX/T-slot size refer to P154 type of piston rod shaft end.

EXTERNAL DIMENSIONS

- JEBL-M5-IN Internal tooth, head manifold block, thread installation



Symbol Bore	MM	W	RR	E	RR1	E1	B	F	LH	EG	EF	ET
32	18	10	55	75	35	55	24	27.5	27.5	RC1/16	∅ 9.7×1.4 Bottom hole ∅ 4.2	M10×1.5×20dp
40	22	10	63	85	40	63	29	31.5	31.5	RC1/16	∅ 9.7×1.4 Bottom hole ∅ 4.2	M10×1.5×20dp
50	28	10	76	100	45	75	28	38	37.5	RC1/8	∅ 9.7×1.4 Bottom hole ∅ 5	M12×1.75×24dp
63	36	14	95	125	65	95	32	47.5	47.5	RC1/8	∅ 9.7×1.4 Bottom hole ∅ 5	M16×2.0×32dp
80	45	14	120	160	80	120	39	60	60	RC1/4	∅ 12.7×1.4 Bottom hole ∅ 7	M20×2.5×35dp
100	56	15	158	200	108	150	36.5	79	75	RC1/4	∅ 12.7×1.4 Bottom hole ∅ 7	M24×3.0×50dp

Symbol Bore	Stroke range	LL	ZJ
32	≤ 140	50	60
40	≤ 160	54	64
50	≤ 170	65	75
63	≤ 180	72	86
80	≤ 190	85	99
100	≤ 200	90	105

Symbol Bore	Stroke range	LL	ZJ
32	> 140	66	76
40	> 160	76	86
50	> 170	82	92
63	> 180	92	106
80	> 190	109	123
100	> 200	106	121

Oil port O-ring size	
Bore	Spec.
∅32	P7
∅40	P7
∅50	P7
∅63	P7
∅80	P10
∅100	P10

Note: IN/EX/T-slot size refer to P154 type of piston rod shaft end.

Tie-rod Hydraulic Cylinder

Mold Hydraulic Cylinders

Swivel & Clamp Hydraulic Cylinders

Booster Cylinders & Unclamping cylinders

ISO Specifications Cylinders

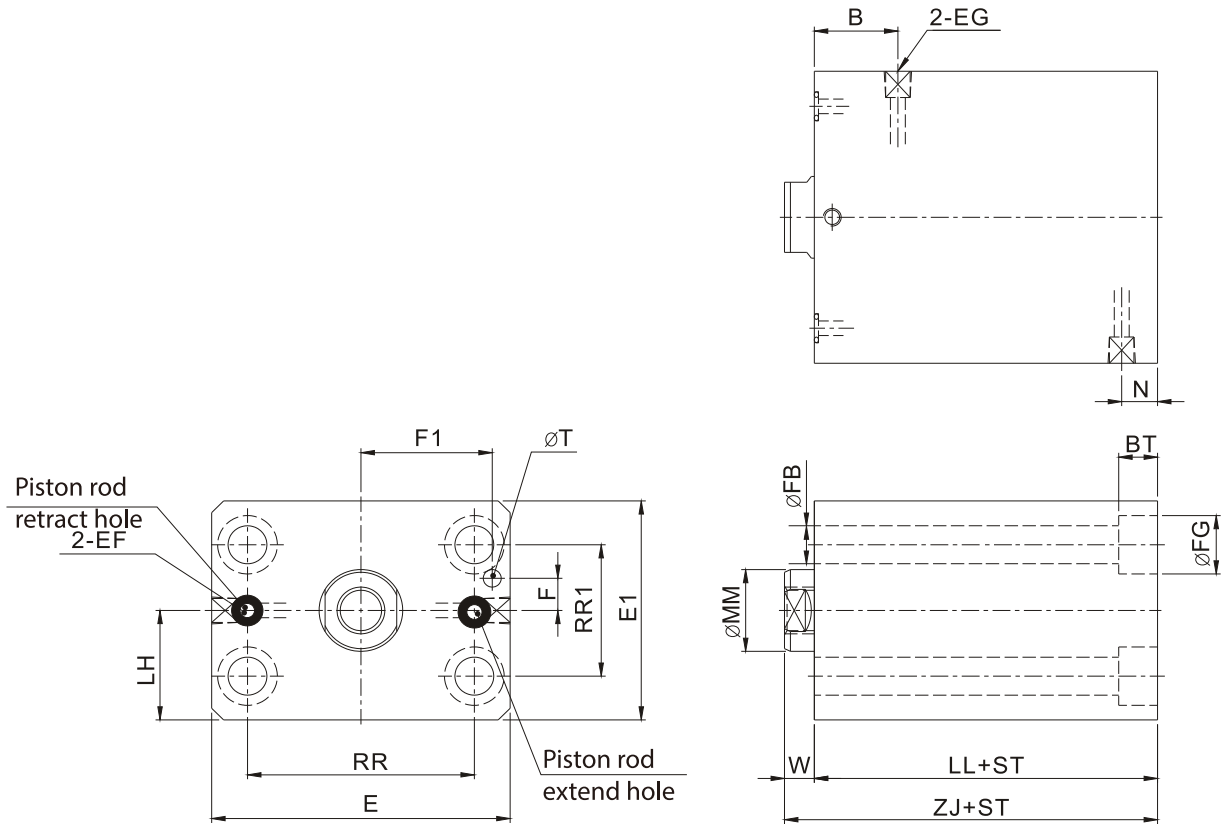
Round Hydraulic Cylinders

Specific Hydraulic Cylinders

Systems & Fittings

EXTERNAL DIMENSIONS

- JEBL-M8-IN Internal tooth, rod manifold block, through-hole installation



Symbol Bore	MM	W	RR	E	RR1	E1	F	F1	T	FG	FB	BT	B	LH	EG	EF
32	18	10	55	75	35	55	9	33	3	16.5	10.5	11	24	27.5	RC1/16	ø9.7×1.4Bottom hole ø 4
40	22	10	63	85	40	63	10	37	5	17	10.5	11	29	31.5	RC1/16	ø9.7×1.4Bottom hole ø 4
50	28	10	76	100	45	75	11	44	6	20	13	13	28	37.5	RC1/8	ø9.7×1.4Bottom hole ø 5
63	36	14	95	125	65	95	15	55	8	26	17	17.5	32	47.5	RC1/8	ø9.7×1.4Bottom hole ø 5
80	45	14	120	160	80	120	18	70	10	32	21	21.5	39	60	RC1/4	ø12.7×1.4Bottom hole ø7
100	56	15	158	200	108	150	25	90	10	38	25	25.5	37	75	RC1/4	ø12.7×1.4Bottom hole ø7

Symbol Bore	Stroke range	N	LL	ZJ
32	≤140	8	50	60
40	≤160	7.5	54	65
50	≤170	12	65	75
63	≤180	13	72	86
80	≤190	16	85	99
100	≤200	21	90	105

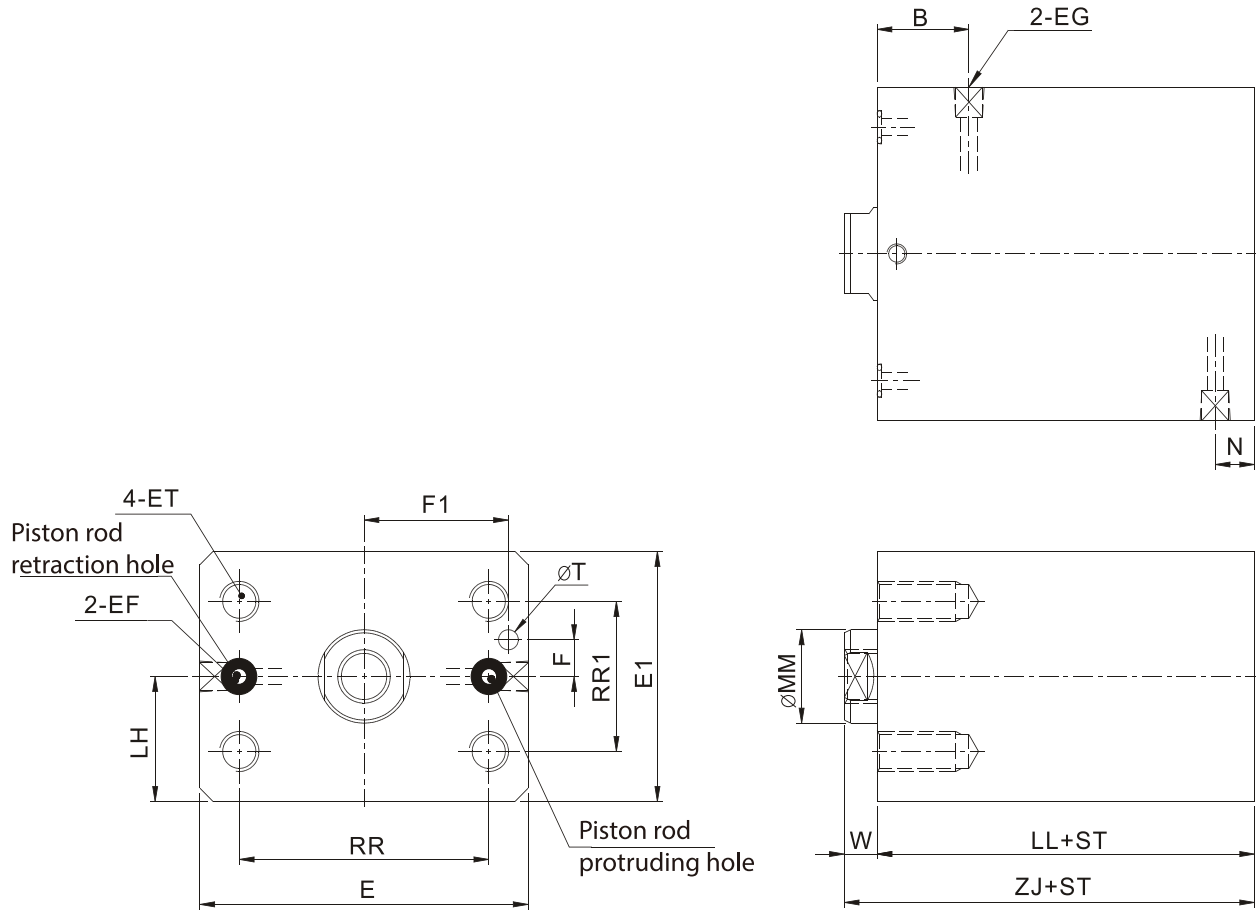
Symbol Bore	Stroke range	N	LL	ZJ
32	>140	24	66	76
40	>160	29.5	76	86
50	>170	29	82	92
63	>180	33	92	106
80	>190	40	109	123
100	>200	37	106	121

Oil port O-ring size	
Bore	Spec.
ø32	P7
ø40	P7
ø50	P7
ø63	P7
ø80	P10
ø100	P10

Note:IN/EX/T-slot size refer to P154 type of piston rod shaft end.

EXTERNAL DIMENSIONS

- JEBL-M9-IN Internal tooth,rod manifold block,thread installation



Tie-rod Hydraulic Cylinder

Mold Hydraulic Cylinders

Swivel & Clamp Hydraulic Cylinders

Booster Cylinders & Unclamping cylinders

ISO Specifications Cylinders

Round Hydraulic Cylinders

Specific Hydraulic Cylinders

Systems & Fittings

Symbol Bore	MM	W	RR	E	RR1	E1	F	F1	T	ET	B	LH	EG	EF
32	18	10	55	75	35	55	9	33	3	M10×1.5×20dp	24	27.5	RC1/16	ø9.7×1.4Bottom hole ø4
40	22	10	63	85	40	63	10	37	5	M10×1.5×20dp	29	31.5	RC1/16	ø9.7×1.4Bottom hole ø4
50	28	10	76	100	45	75	11	44	6	M12×1.75×24dp	28	37.5	RC1/8	ø9.7×1.4Bottom hole ø5
63	36	14	95	125	65	95	15	55	8	M16×2.0×32dp	32	47.5	RC1/8	ø9.7×1.4Bottom hole ø5
80	45	14	120	160	80	120	18	70	10	M20×2.5×35dp	39	60	RC1/4	ø12.7×1.4Bottom hole ø7
100	56	15	158	200	108	150	25	90	10	M24×3.0×50dp	37	75	RC1/4	ø12.7×1.4Bottom hole ø7

Symbol Bore	Stroke range	N	LL	ZJ
32	≤140	8	50	60
40	≤160	7.5	54	65
50	≤170	12	65	75
63	≤180	13	72	86
80	≤190	16	85	99
100	≤200	21	90	105

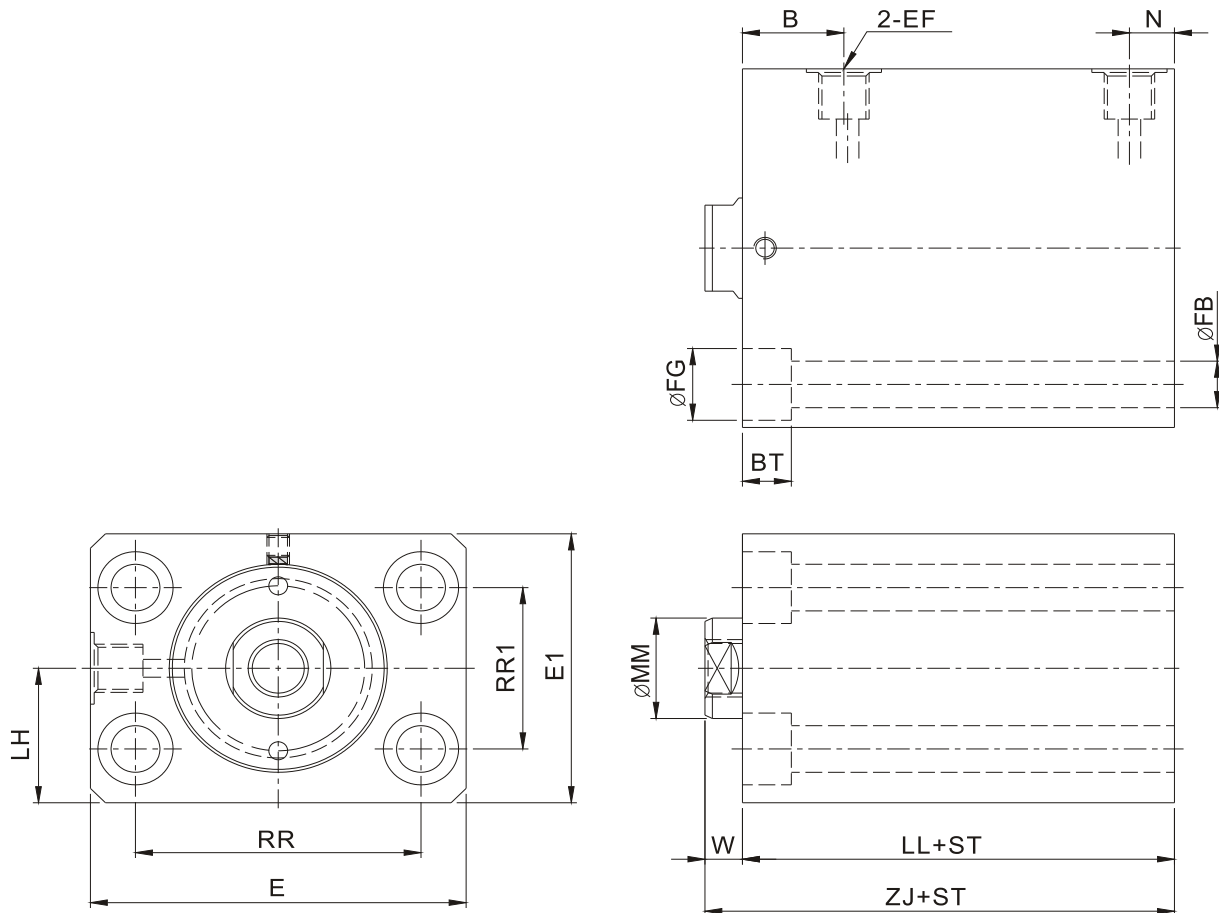
Symbol Bore	Stroke range	N	LL	ZJ
32	>140	24	66	76
40	>160	29.5	76	86
50	>170	29	82	92
63	>180	33	92	106
80	>190	40	109	123
100	>200	37	106	121

Oil port O-ring size	
Bore	Spec.
ø32	P7
ø40	P7
ø50	P7
ø63	P7
ø80	P10
ø100	P10

Note:IN/EX/T-slot size refer to P154 type of piston rod shaft end.

EXTERNAL DIMENSIONS

- JEBL-M6-IN Internal tooth,through-hole installation(countersunk in front)



Symbol Bore	MM	W	FG	FB	BT	B	LH	RR	E	RR1	E1	EF
32	18	10	16.5	10.5	11	21	27.5	55	75	35	55	G1/4
40	22	10	17	10.5	11	25	31.5	63	85	40	63	G1/4
50	28	10	20	13	13	27	37.5	76	100	45	75	G1/4
63	36	14	26	17	17.5	27	47.5	95	125	65	95	G1/2
80	45	14	32	21	21.5	35	60	120	160	80	120	G1/2
100	56	15	38	25	25.5	36	75	158	200	108	150	G1/2

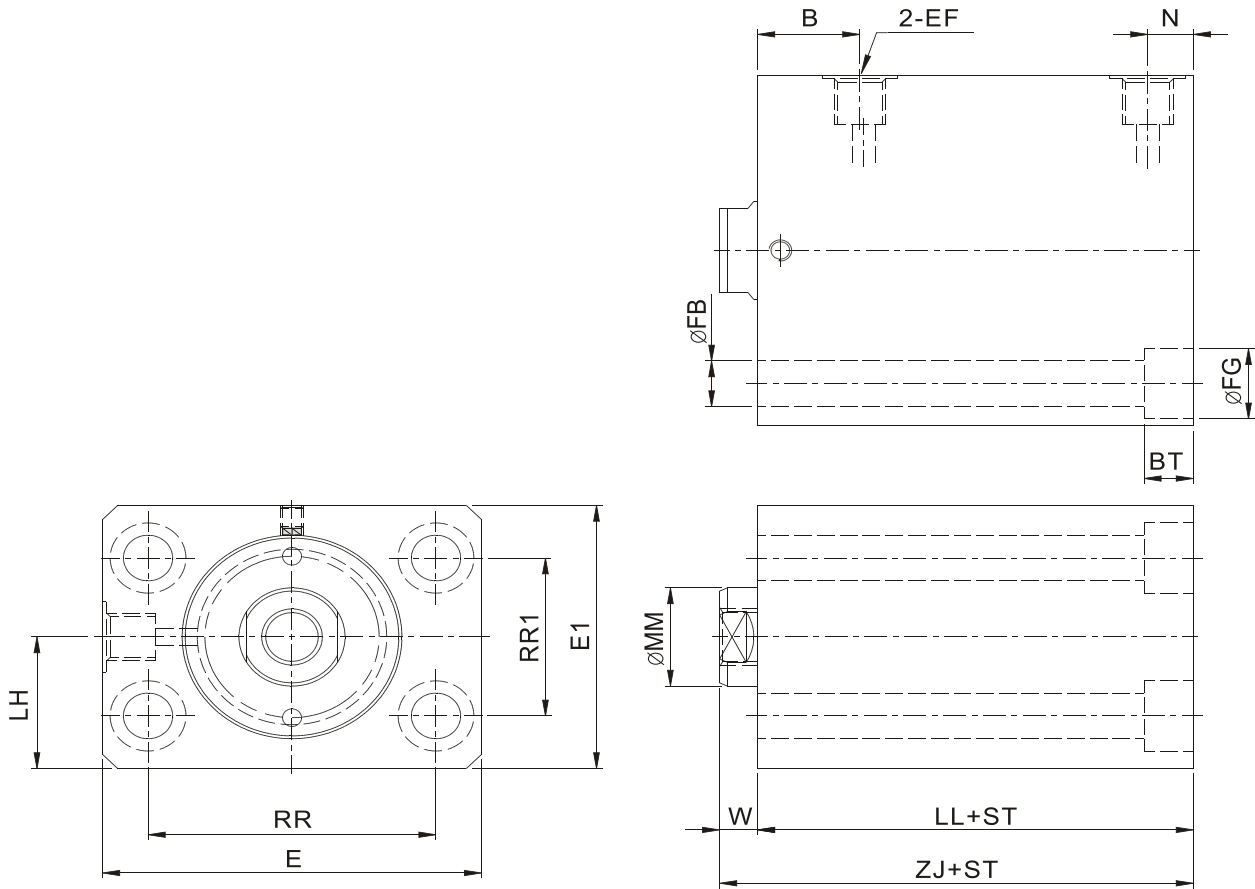
Symbol Bore	Stroke range	N	LL	ZJ
32	≤140	11	50	60
40	≤160	11	54	64
50	≤170	12	65	75
63	≤180	17	72	86
80	≤190	20	85	99
100	≤200	20	90	105

Symbol Bore	Stroke range	N	LL	ZJ
32	>140	21	66	76
40	>160	25	76	86
50	>170	27	82	92
63	>180	27	92	106
80	>190	35	109	123
100	>200	36	106	121

Note:IN/EX/T-slot size refer to P154 type of piston rod shaft end.

EXTERNAL DIMENSIONS

- JEBL-M7-IN Internal tooth,through-hole installation(countersunk behind)



Tie-rod Hydraulic Cylinder

Mold Hydraulic Cylinders

Swivel & Clamp Hydraulic Cylinders

Booster Cylinders & Unclamping cylinders

ISO Specifications Cylinders

Round Hydraulic Cylinders

Specific Hydraulic Cylinders

Systems & Fittings

Symbol Bore	MM	W	FG	FB	BT	B	LH	RR	E	RR1	E1	EF
32	18	10	16.5	10.5	11	21	27.5	55	75	35	55	G1/4
40	22	10	17	10.5	11	25	31.5	63	85	40	63	G1/4
50	28	10	20	13	13	27	37.5	76	100	45	75	G1/4
63	36	14	26	17	17.5	27	47.5	95	125	65	95	G1/2
80	45	14	32	21	21.5	35	60	120	160	80	120	G1/2
100	56	15	38	25	25.5	36	75	158	200	108	150	G1/2

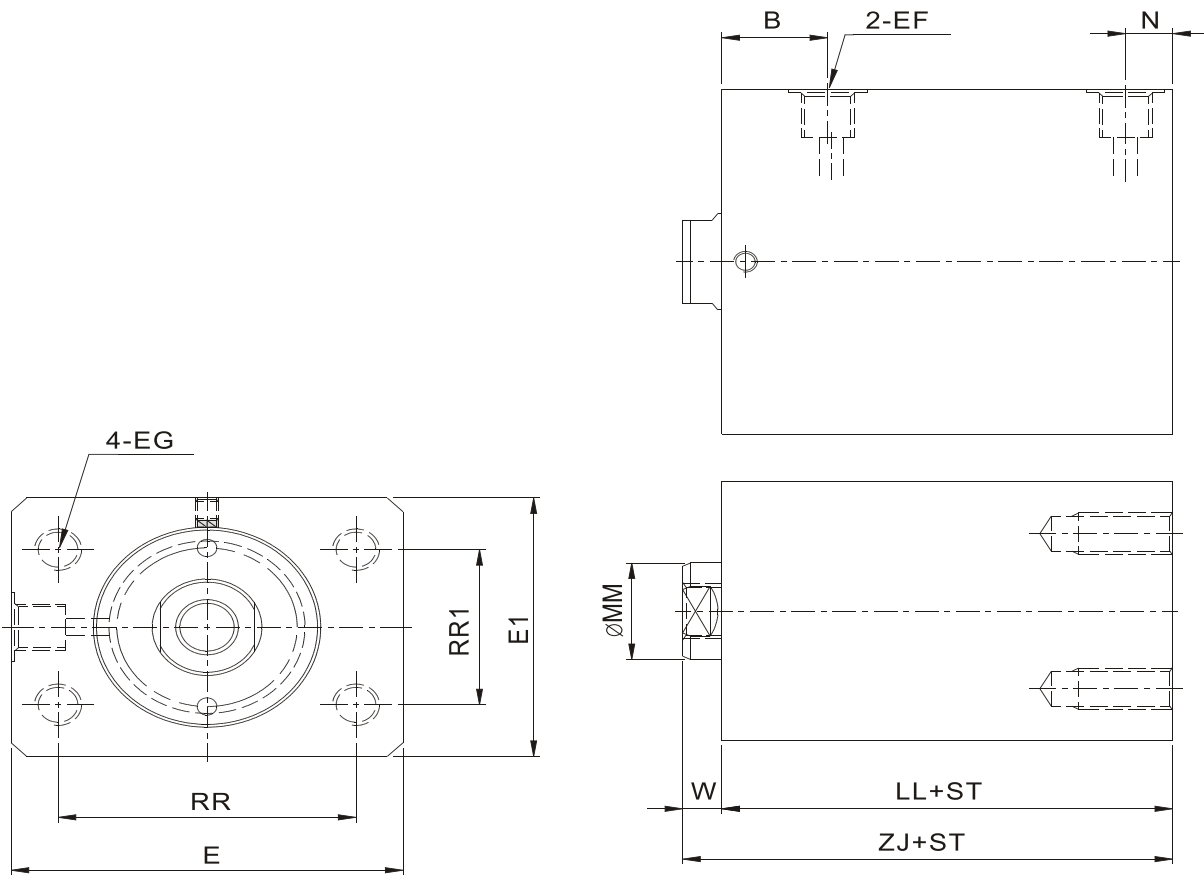
Symbol Bore	Stroke range	N	LL	ZJ
32	≤140	11	50	60
40	≤160	11	54	64
50	≤170	12	65	75
63	≤180	17	72	86
80	≤190	20	85	99
100	≤200	20	90	105

Symbol Bore	Stroke range	N	LL	ZJ
32	>140	21	66	76
40	>160	25	76	86
50	>170	27	82	92
63	>180	27	92	106
80	>190	35	109	123
100	>200	36	106	121

Note:IN/EX/T-slot size refer to P154 type of piston rod shaft end.

EXTERNAL DIMENSIONS

- JEBL-M10-IN Internal tooth,thread installation(thread behind)



Symbol Bore	MM	W	EG	B	LH	RR	E	RR1	E1	EF
32	18	10	M10×1.5×20dp	21	27.5	55	75	35	55	G1/4
40	22	10	M10×1.5×20dp	25	31.5	63	85	40	63	G1/4
50	28	10	M12×1.75×24dp	27	37.5	76	100	45	75	G1/4
63	36	14	M16×2.0×32dp	27	47.5	95	125	65	95	G1/2
80	45	14	M20×2.5×35dp	35	60	120	160	80	120	G1/2
100	56	15	M24×3.0×50dp	36	75	158	200	108	150	G1/2

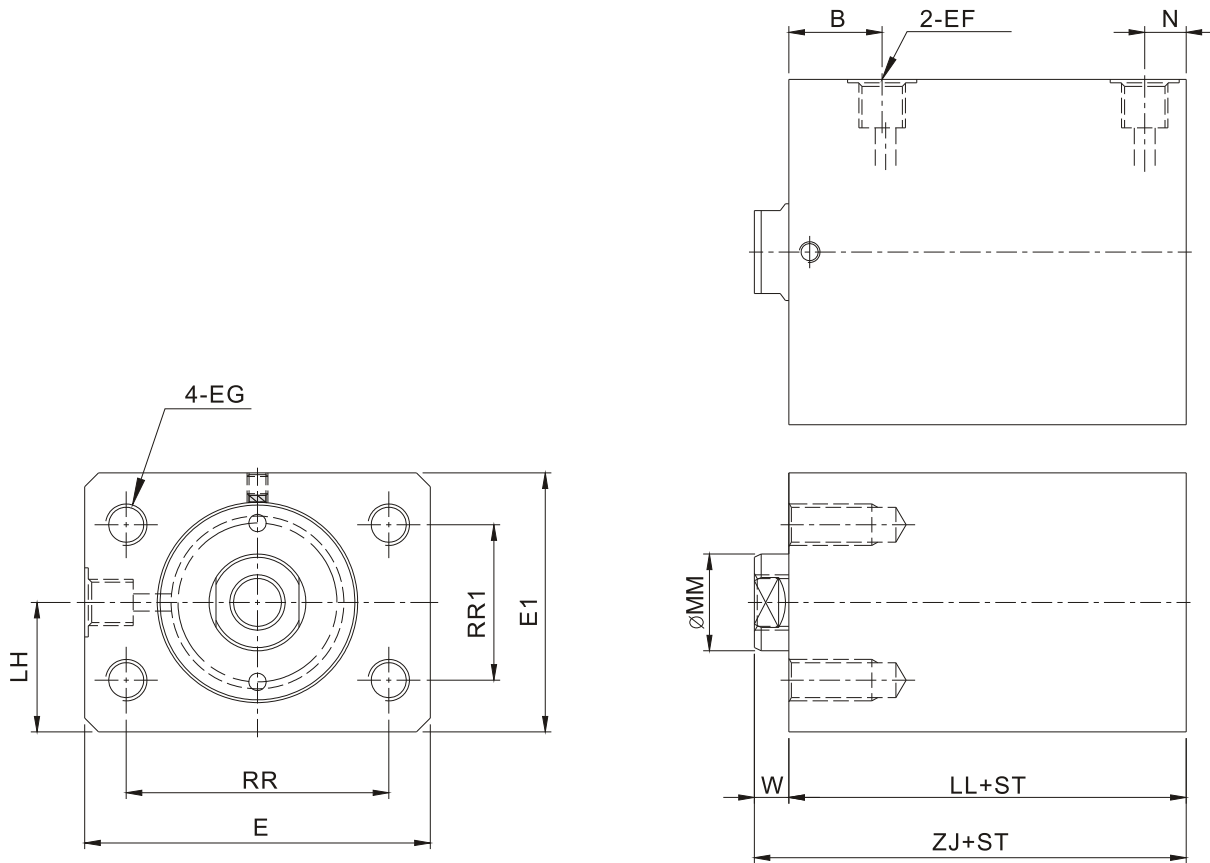
Symbol Bore	Stroke range	N	LL	ZJ
32	≤140	11	50	60
40	≤160	11	54	64
50	≤170	12	65	75
63	≤180	17	72	86
80	≤190	20	85	99
100	≤200	20	90	105

Symbol Bore	Stroke range	N	LL	ZJ
32	>140	21	66	76
40	>160	25	76	86
50	>170	27	82	92
63	>180	27	92	106
80	>190	35	109	123
100	>200	36	106	121

Note:IN/EX/T-slot size refer to P154 type of piston rod shaft end.

EXTERNAL DIMENSIONS

- JEBL-M11-IN Internal tooth,thread installation(thread in front)



Tie-rod Hydraulic Cylinder

Mold Hydraulic Cylinders

Swivel & Clamp Hydraulic Cylinders

Booster Cylinders & Unclamping cylinders

ISO Specifications Cylinders

Round Hydraulic Cylinders

Specific Hydraulic Cylinders

Systems & Fittings

Symbol	MM	W	EG	B	LH	RR	E	RR1	E1	EF
Bore 32	18	10	M10×1.5×20dp	21	27.5	55	75	35	55	G1/4
Bore 40	22	10	M10×1.5×20dp	25	31.5	63	85	40	63	G1/4
Bore 50	28	10	M12×1.75×24dp	27	37.5	76	100	45	75	G1/4
Bore 63	36	14	M16×2.0×32dp	27	47.5	95	125	65	95	G1/2
Bore 80	45	14	M20×2.5×35dp	35	60	120	160	80	120	G1/2
Bore 100	56	15	M24×3.0×50dp	36	75	158	200	108	150	G1/2

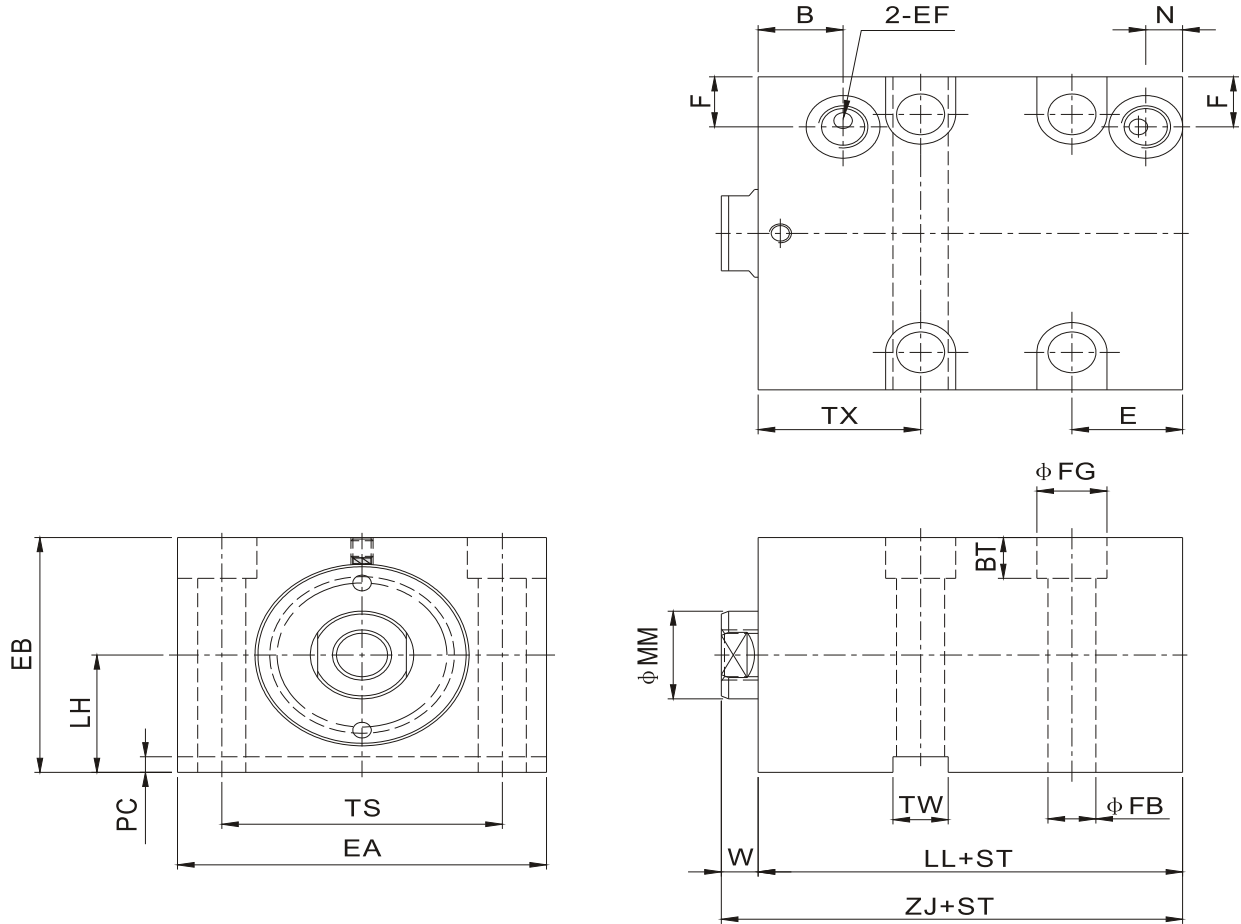
Symbol	Stroke range	N	LL	ZJ
Bore 32	≤140	11	50	60
Bore 40	≤160	11	54	64
Bore 50	≤170	12	65	75
Bore 63	≤180	17	72	86
Bore 80	≤190	20	85	99
Bore 100	≤200	20	90	105

Symbol	Stroke range	N	LL	ZJ
Bore 32	>140	21	66	76
Bore 40	>160	25	76	86
Bore 50	>170	27	82	92
Bore 63	>180	27	92	106
Bore 80	>190	35	109	123
Bore 100	>200	36	106	121

Note:IN/EX/T-slot size refer to P154 type of piston rod shaft end.

EXTERNAL DIMENSIONS

- JEBL-M13-IN Internal tooth,foot flange



Symbol	MM	W	TW	FB	FG	BT	TX	B	PC	LH	EB	TS	EA	EF	F
Bore 32	18	10	12	10.5	17	11	38	18	3	27.5	55	55	75	G1/4	11
Bore 40	22	10	12	10.5	17	11	40	20	3	31.5	63	63	85	G1/4	13
Bore 50	28	10	15	13	19	13	44	23	5	37.5	75	76	100	G1/4	16
Bore 63	36	14	20	17	25	17.5	50	22	5	47.5	95	95	125	G1/2	17
Bore 80	45	14	24	21	32	21.5	60	29	7	60	120	120	160	G1/2	26
Bore 100	56	15	28	25	39	25.5	64	30	7	75	150	158	200	G1/2	33

Symbol	Stroke range	N	E	LL	ZJ
Bore 32	≤ 140	10	30	50	60
Bore 40	≤ 160	10	30	54	64
Bore 50	≤ 170	10	30	65	75
Bore 63	≤ 180	16	44	72	86
Bore 80	≤ 190	16	47	85	99
Bore 100	≤ 200	19	54	90	105

Symbol	Stroke range	N	E	LL	ZJ
Bore 32	>140	18	38	66	76
Bore 40	>160	20	40	76	86
Bore 50	>170	23	44	82	92
Bore 63	>180	22	50	92	106
Bore 80	>190	29	60	109	123
Bore 100	>200	29	64	106	121

Note:IN/EX/T-slot size refer to P154 type of piston rod shaft end.