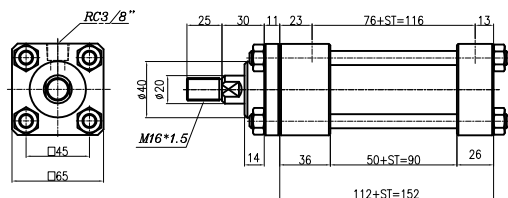
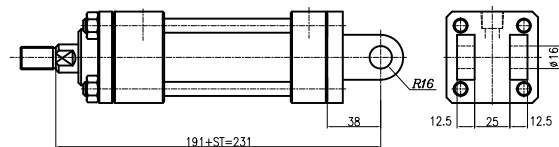


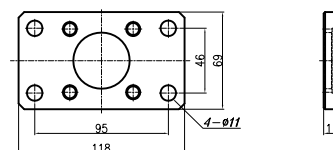
SD TYPE



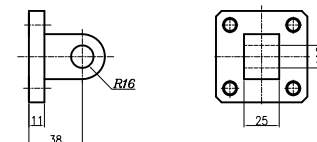
CB TYPE



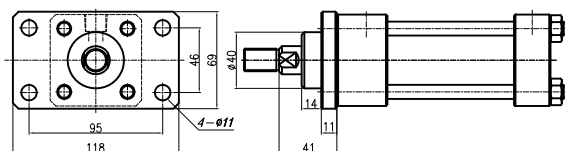
FA



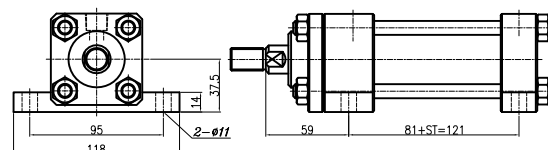
CA



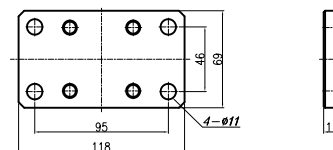
FA TYPE



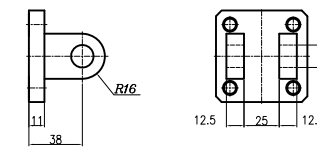
LA TYPE



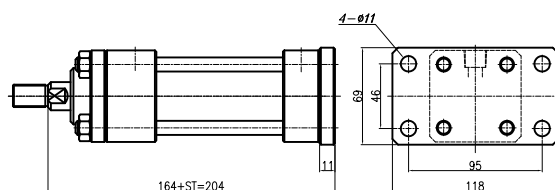
FB



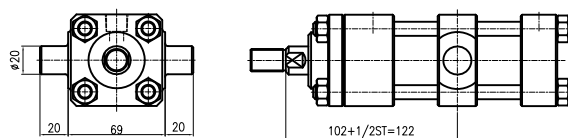
CB TYPE



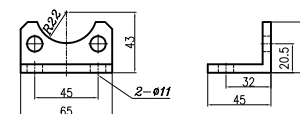
FB TYPE



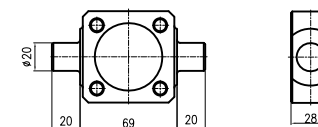
TC TYPE



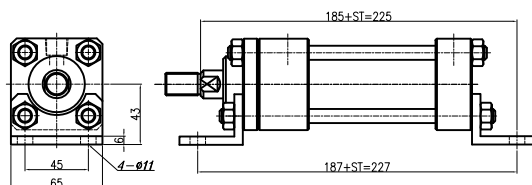
LB



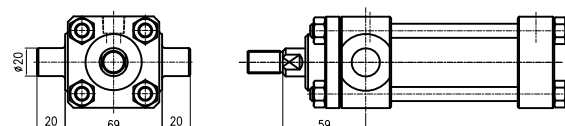
TC



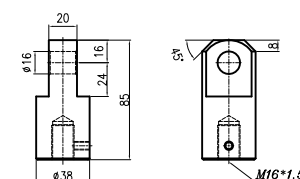
LB TYPE



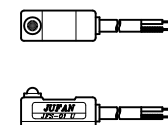
TA TYPE



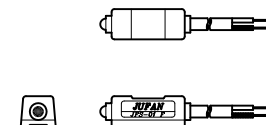
I



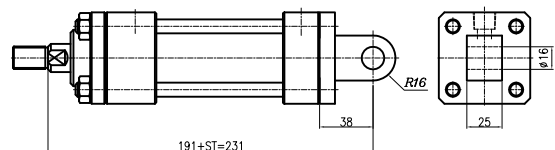
JFS-01 U



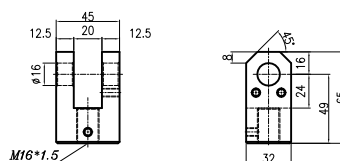
JFS-01 F



CA TYPE



Y



JUFAN CORP.

TIE ROD HYDRAULIC CYL  
(INCLUDE INDUCTION TYPE)

2012/10/15

SCALE=1/1

BORE=40mm

STROKE=40mm

HC2C04001

NOTE: THIS HARDCOPY IS 1/5.5 SCALE DUE TO THE A4 SIZE PRINTING