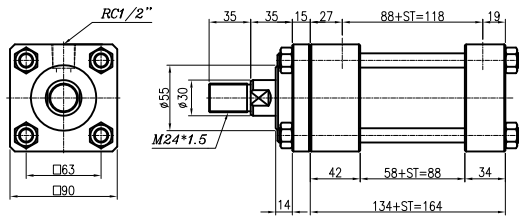
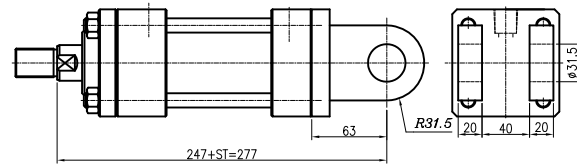


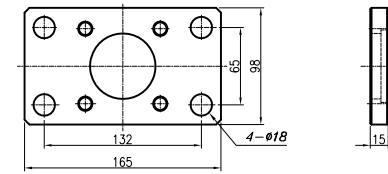
SD TYPE



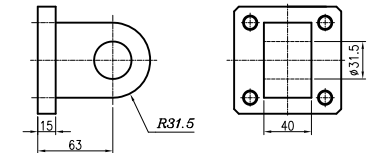
CB TYPE



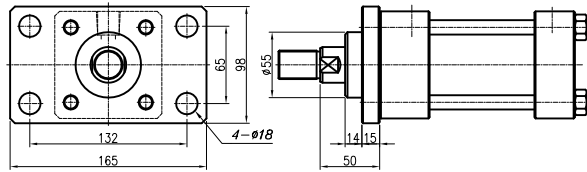
FA



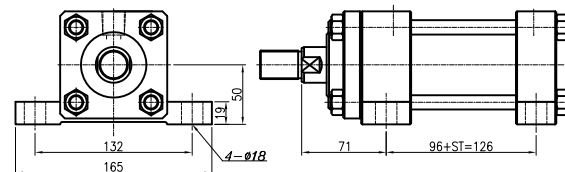
CA



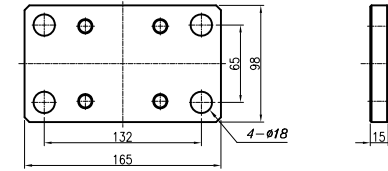
FA TYPE



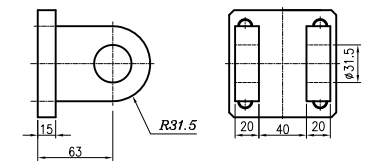
LA TYPE



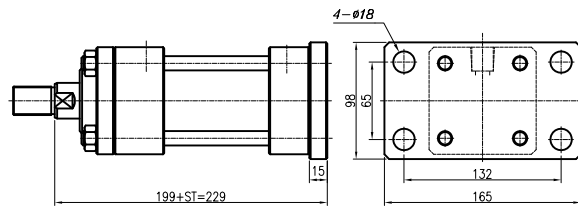
FB



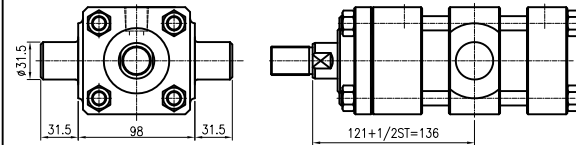
CB



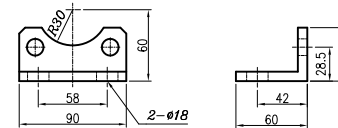
FB TYPE



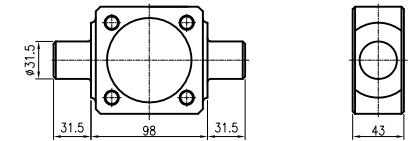
TC TYPE



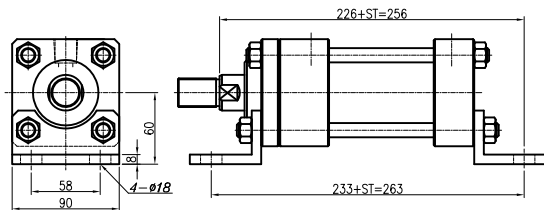
LB



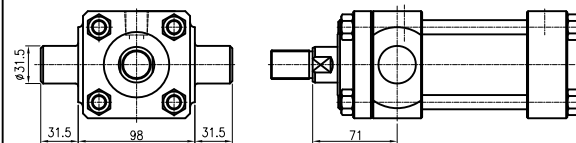
TC



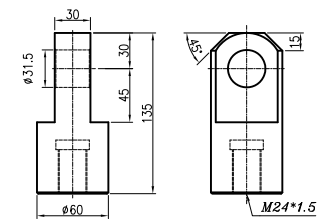
LB TYPE



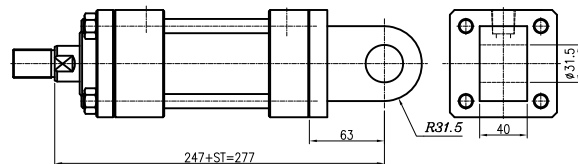
TA TYPE



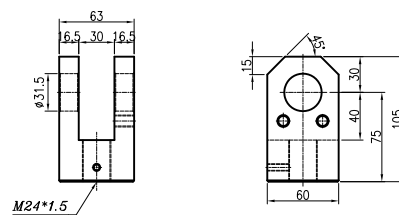
I



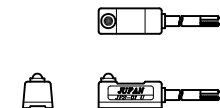
CA TYPE



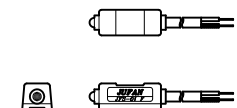
Y



JFS-01 U



JFS-01 F



JUFAN CORP.

TIE ROD HYDRAULIC CYL
(INCLUDE INDUCTION TYPE)

2012/10/19

SCALE=1/1

BORE=63mm

STROKE=30mm

HC2C06301

NOTE: THIS HARDCOPY IS 1/6.5 SCALE DUE TO THE A4 SIZE PRINTING