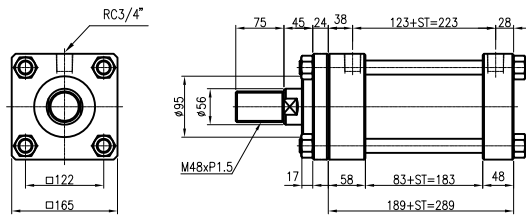
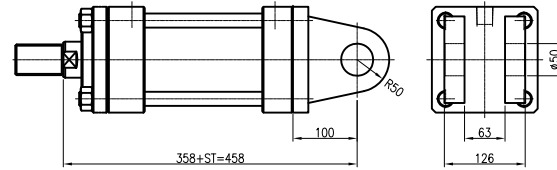


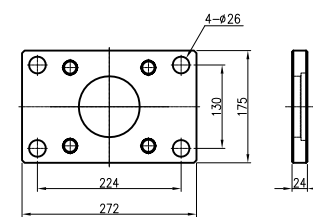
SD TYPE



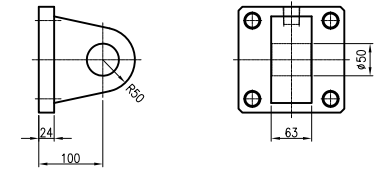
CB TYPE



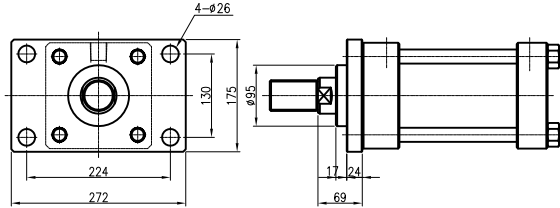
FA



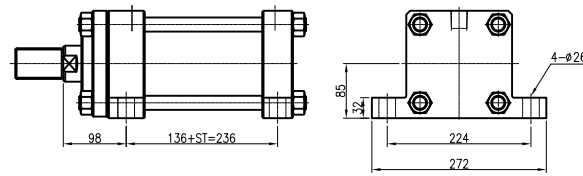
CA



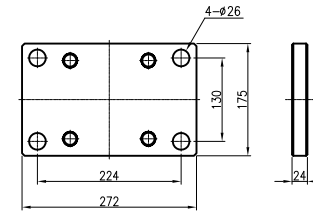
FA TYPE



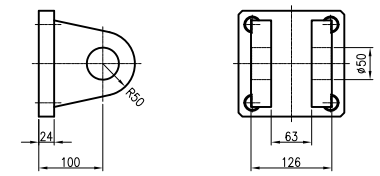
LA TYPE



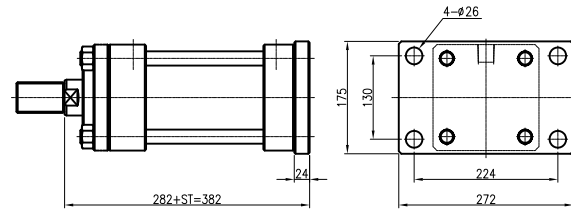
FB



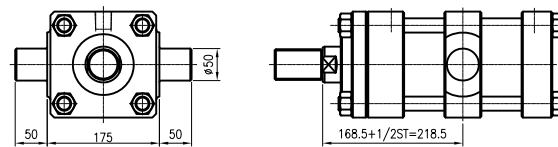
CB



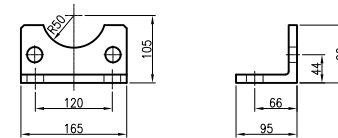
FB TYPE



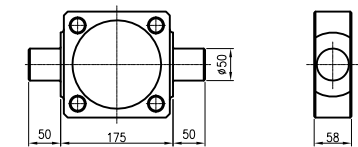
TC TYPE



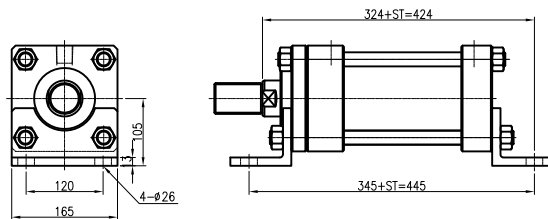
LB



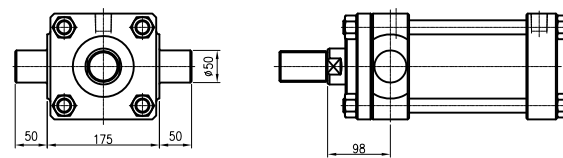
TC



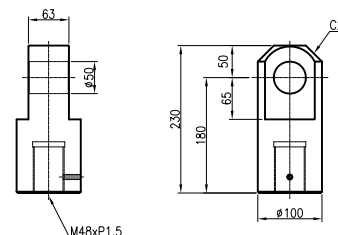
LB TYPE



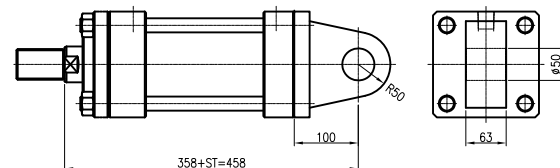
TA TYPE



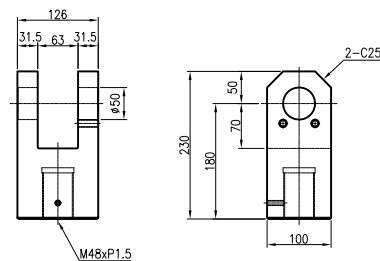
I



CA TYPE



Y



JFS-01 U



JFS-01 F



JUFAN CORP.

TIE ROD HYDRAULIC CYL
(INCLUDE INDUCTION TYPE)

2012/10/19

SCALE=1/1

BORE=125mm

STROKE=100mm

HC2C12501