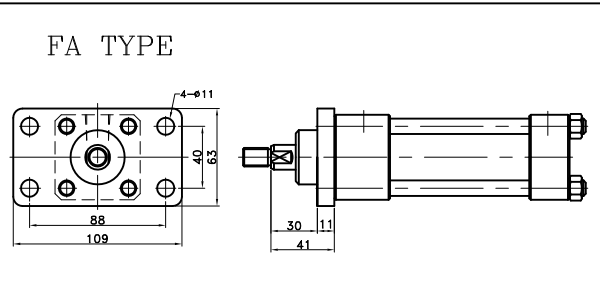


SD TYPE



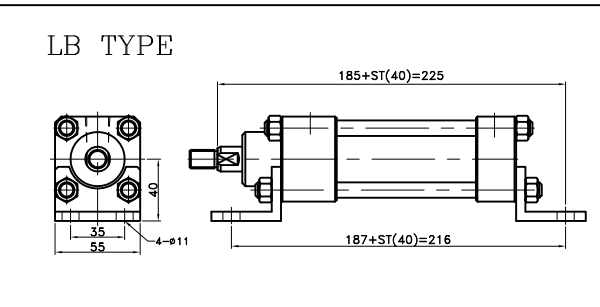
Technical drawing of the FB Type connector, showing side and top views with dimensions in millimeters.

Side View Dimensions:

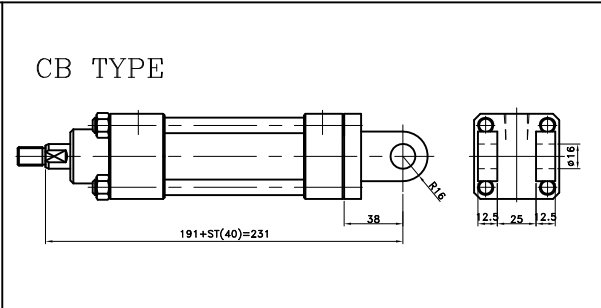
- Total length: $164 + ST(40) = 204$
- Flange thickness: 11

Top View Dimensions:

- Overall width: 109
- Overall height: 63
- Distance between mounting holes (center-to-center): 88
- Distance from top edge to mounting holes: 40
- Mounting holes: 4- $\phi 11$



CA TYPE



LA TYPE

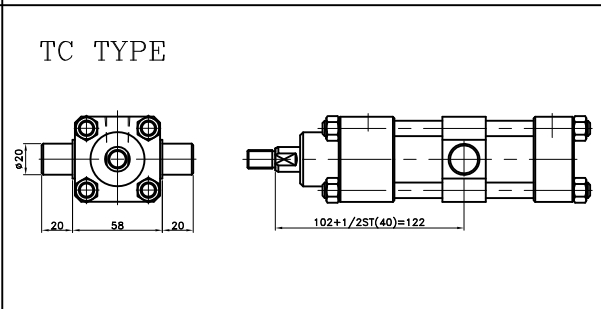
Technical drawing of the LA TYPE valve, showing front and side views with dimensions.

Front View Dimensions:

- Overall width: 109
- Inner width: 88
- Height: 35
- Port diameter: $4-\phi 11$

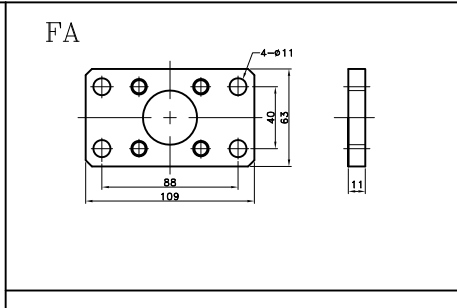
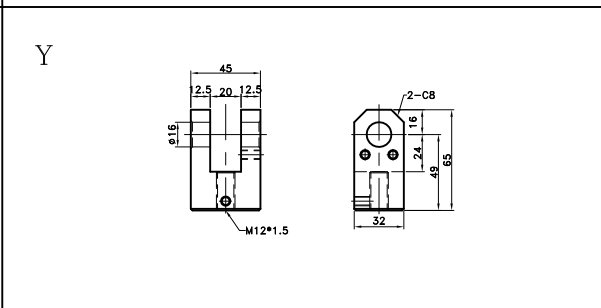
Side View Dimensions:

- Flange thickness: 59
- Stroke length: $81 + ST(40) = 121$

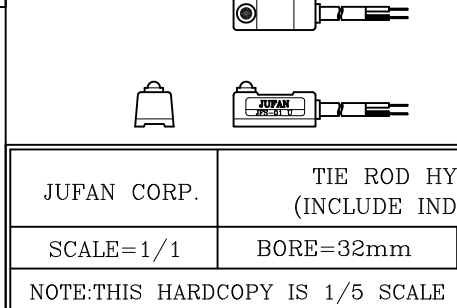
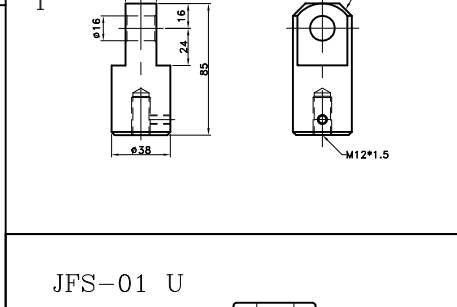
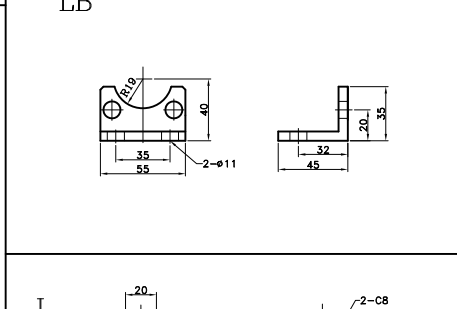


TA TYPE

Technical drawing of the TA TYPE valve. The front view (left) shows a square body with a central port and four side ports. Dimensions: central port diameter 12.7, body width 58, side port diameter 20, and side port offset 20. The side view (right) shows the valve's profile with a total length of 59.



Technical drawing of a rectangular plate. The front view shows a rectangle with overall dimensions of 109 (width) and 63 (height). There are eight circular holes arranged in two rows of four. The distance between the centers of the holes in a row is 88. The distance from the center of a hole to the nearest edge is 40. A cross-section view on the right shows the plate has a thickness of 11. A detail callout points to one of the holes, showing its diameter as 4-φ11.

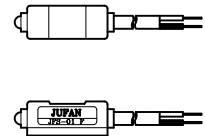
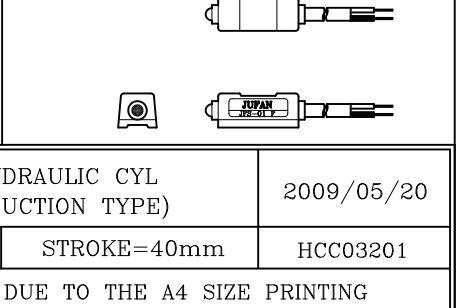
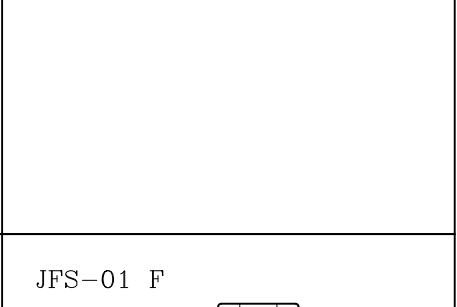
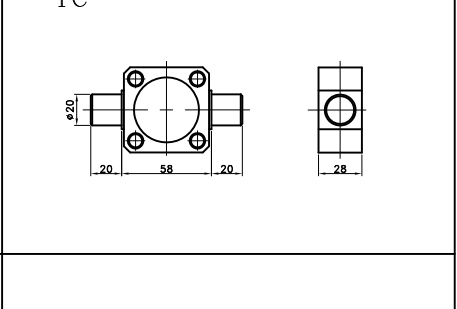


CB

Technical drawing of a mechanical part, labeled CB. The drawing includes a front view and a side view.

Front View: Shows a rectangular block with a semi-circular end. The total width is 38. The height of the rectangular part is 11. The radius of the semi-circular end is R16.

Side View: Shows a rectangular block with a total width of 25 and a height of 16. There are four circular features, one in each corner, with a diameter of 12.5.



NOTE:THIS HARDCOPY IS 1/5 SCALE DUE TO THE A4 SIZE PRINTING